



NORTH CAROLINA
OUTWARD BOUND SCHOOL

2014

Annual Report



© 2015



Dear Friends,

It is with deep appreciation for your ongoing commitment and support that we write to you. North Carolina Outward Bound School (NCOBS) continues to deliver its mission, day after day, by offering our students unparalleled opportunities for challenge and discovery. After 47 years, Outward Bound's founding Four Pillars – Self-Reliance, Fitness, Craftsmanship and above all, Compassion – steadfastly guide our educational process and our organizational principles. Thanks to your generosity, NCOBS continues to offer courses that truly do change the lives of young people, veterans, educators, and adults from all walks of life.

We continually receive “thank you” letters from our alumni. These letters speak of transformation and gratitude for lives changed, especially those from our scholarship recipients. They signify the change Outward Bound's founder Kurt Hahn sought when he developed an educational model whose purpose was to discover this: “you have more in you than you know.”

The experience that you provided for me changed my life on so many different levels. Through the tears, aches, pains and smiles, I became a better person. I learned how to love what I have and work for what I want. So thank you for this incredible experience and please do not stop helping to change young people's lives.

-NCOBS Alum, Age 16, 22-day course

Our Four Pillars provide the standard to which we teach, manage and serve as one of the leading outdoor education programs in the world. As guiding principles in our teaching, the Pillars effect change. Research studies confirm that NCOBS alumni report significant improvements in leadership, character development and environmental awareness. Increases in self-confidence, initiative-taking and empathy are also indicated. We attribute these gains to our focus on the founding Pillars.

We translate the Pillars into organizational principles that demonstrate these guiding values. They are evident in our commitment to staff development, sustainable practices in finances and long-term planning, a culture of tenacity and compassion in the workplace, stewardship of your generous contributions, and robust scholarship outreach.

Of the 4,354 students served during the 2013-2014 fiscal year (April 1, 2013 to March 31, 2014), 1,756 or 40% received scholarship and financial aid support – representing nearly \$1.1 million in support. The beneficiaries include students and teachers from our many partner schools up and down the east coast, open enrollment students, Unity Project participants from Charlotte, Atlanta Public School students, members of the Metro Atlanta Boys and Girls Clubs, Summer Search students, and Veterans from across the United States. We are extremely proud to work for an organization so deeply committed to serving ALL students, and we invite you to celebrate these accomplishments with us.

In the following pages, we recognize the friends and supporters who make the work of the North Carolina Outward Bound School possible. Our Board of Directors and staff work diligently to ensure the effective management of the funds we receive from our generous donors – a total of \$1,653,496 of which \$1,352,735 (82%) was in support of scholarships. Our contributions in the last fiscal year account for 25% of our total annual operating budget.

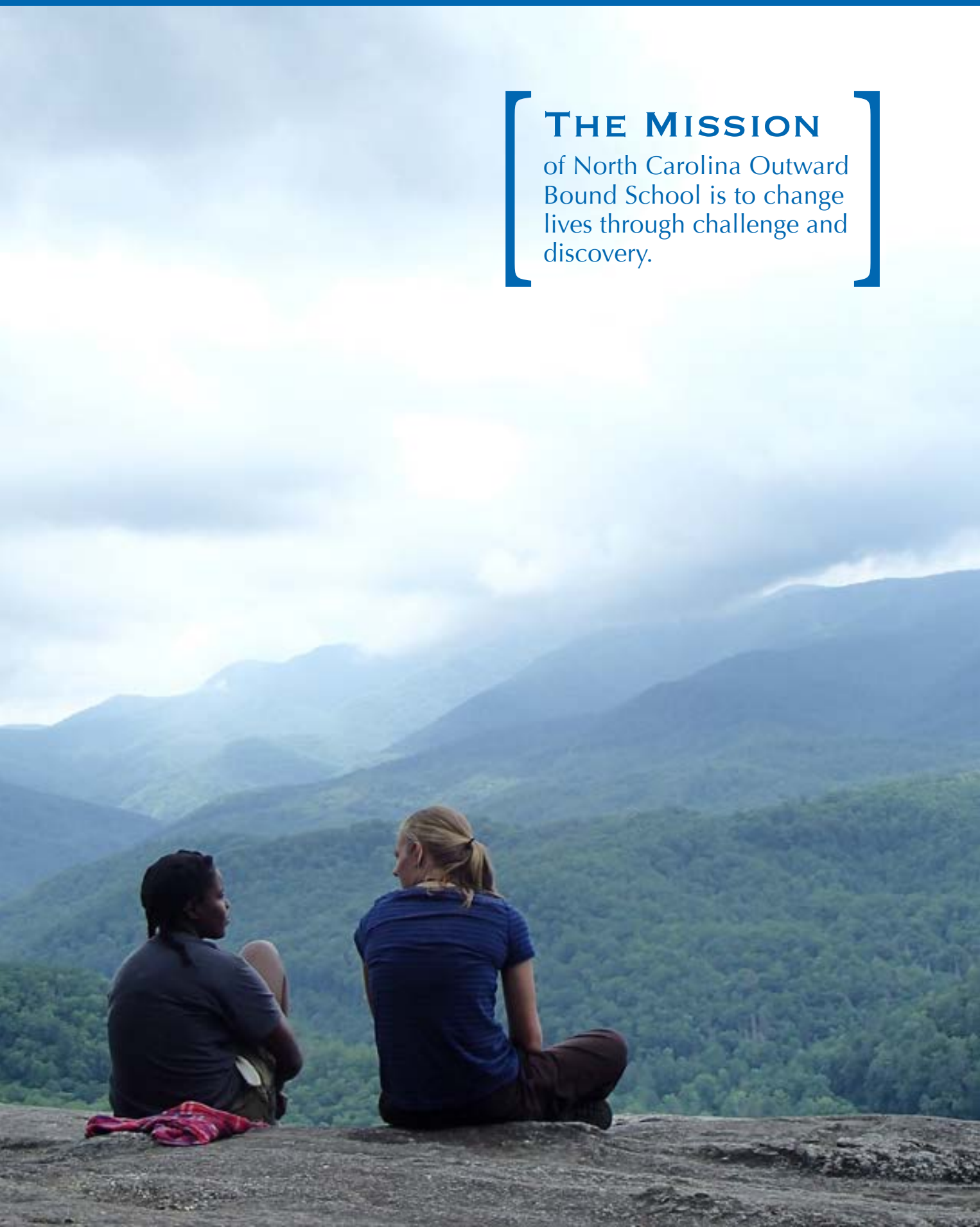
Thanks to strong support from our dedicated donors, Board of Directors, staff, volunteers and corporate, educational and institutional partners, we are able to move with confidence towards our 50th Anniversary in 2017. On behalf of our School, we thank you for supporting our mission and inspiring thousands of students to live by the Four Pillars of Outward Bound: Self-Reliance, Fitness, Craftsmanship and above all, Compassion.

Until our paths cross again, take care,

Whitney H. Montgomery, Executive Director

Deb Follo Caughron, Chair, Board of Directors (2010-14)

THE MISSION
of North Carolina Outward Bound School is to change lives through challenge and discovery.



2014 BOARD OF DIRECTORS

- Aram Attarian
- Heather Baldino
- Ann R. Baruch
- Amos N. Beason
- Susan R. Buckley
- R. Gordon Caudle
- Deb Follo Caughron
- Robert S. Cox
- Rufus M. Dalton
- Henry W. Flint
- Melissa Kienbaum Golder
- Matthew J. Gould
- David P. Hardy
- Stephen C. Hassenfelt
- Thomas James
- Darian C. Jones
- W. States Lee IV
- Edward G. Lilly III
- Henry D. McHenry, Jr.
- Richard V. Michaels
- Andrew Tyler Mink
- Marty O'Keefe
- Scott B. Perper
- Scott Puritz
- J. Kenton Richards
- L. Kent Satterfield
- Richard K. Schell
- Robert M. Schwartzberg
- Benjamin Smeal
- Michèle Taylor
- Mitchell Wickham
- Jeffrey A. Yost

LIFETIME DIRECTORS

- Arthur M. Blank
- Marjorie H. Whittaker

HONORARY DIRECTORS

- John C. Huie
- Dan Meyer



My proudest accomplishment on course would be finishing my hike on the second day of course. It was extremely difficult for me to continue hiking especially in the rain. Nevertheless I completed it and I will remember that feeling of accomplishment for the rest of my life. I faced so many challenges, mentally and physically on this course. Overcoming them has given me the strength and courage to take on so many more. Whether it be school or work, I feel like I can accomplish any goal I set my mind to.

-NCOBS Alum, Age 16, 22-day course

THE FOUR PILLARS

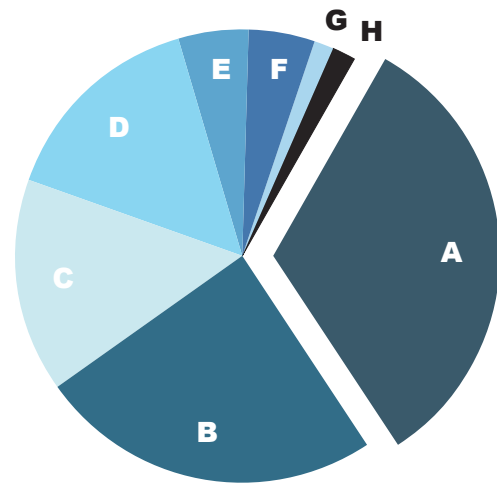
THE BUILDING BLOCKS

As we approach the celebration of our 50th Anniversary in 2017, we pause to pay tribute to our timeless guides – Outward Bound’s Pillars of Self-Reliance, Fitness, Craftsmanship and above all, Compassion. They are even more relevant today than they were at our founding in 1967.

The true power of these Pillars lies not in their permanence but in their living, breathing relevance to each student who interprets them for the first time. They take on new meaning while navigating rapids, pitching tents in a storm, or finding the crux move on a climb. They are equally relevant to our organizational practices and form the basis of our sustainable principles in operations, management and finances.

NUMBER OF STUDENTS BY COURSE TYPE

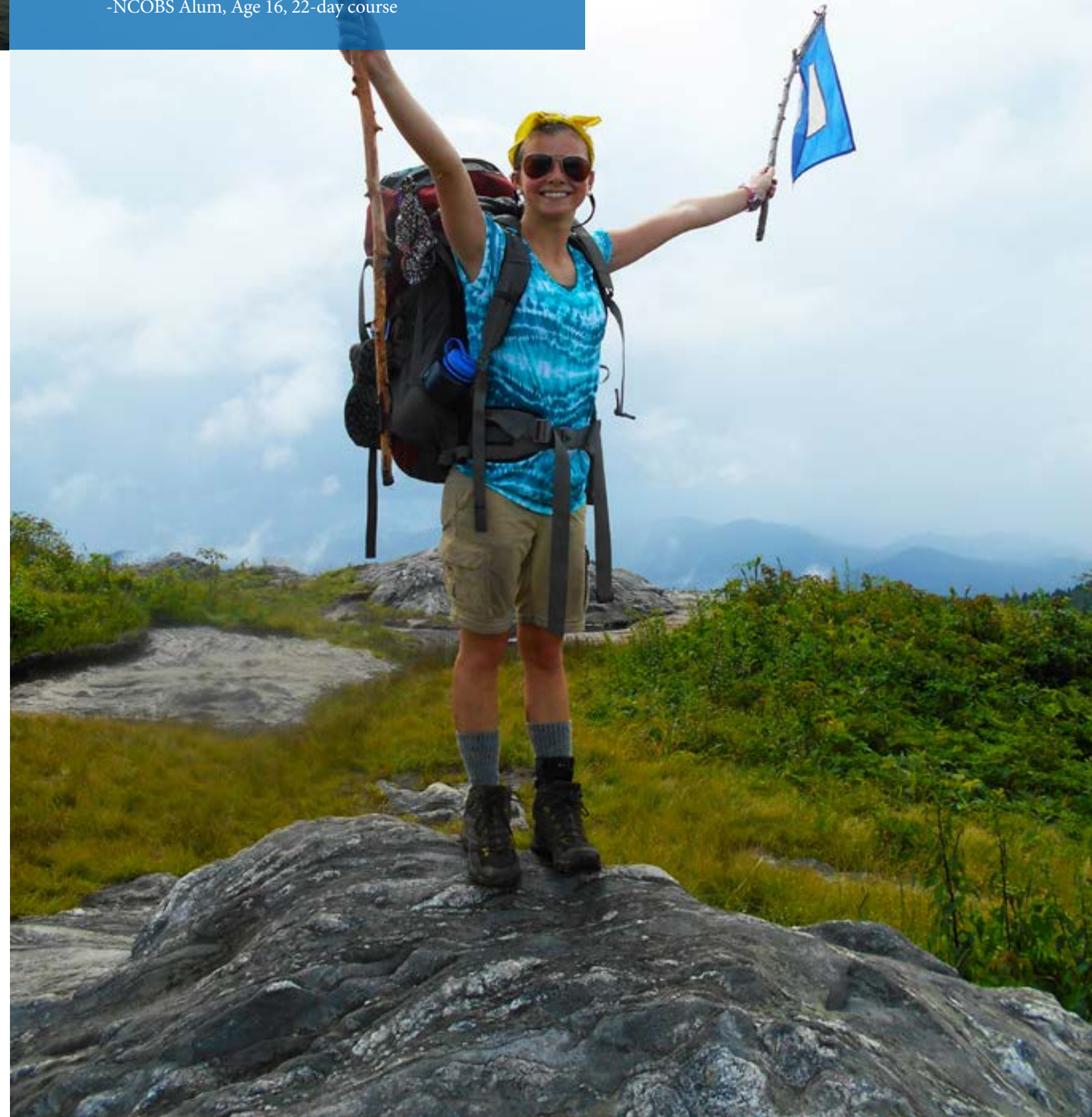
A	Group Education Program	1,419
B	Outward Bound Atlanta Program	1,072
C	Open Enrollment Courses	659
D	Outward Bound Professional Program	648
E	Families In Need of Services (FINS)	221
F	Veterans Program	206
G	Struggling Teens/Young Adults Program	65
H	Educators Program	64



Leading the Way | THE PILLARS AT WORK

In a recent study about the impacts of NCOBS wilderness courses, 100% of the 200 NCOBS participants surveyed reported significant improvements in leadership, character development and environmental awareness (2012, Bobilya and Faircloth). In particular, students reported these positive changes:

- Growth in understanding of who they are, their place in the world and their ability to persevere and overcome challenges
- Discovery that they are able to do more than they thought
- Increase in their understanding of group dynamics and interpersonal skills
- Increase in self-confidence and their ability to set goals and achieve them
- Return home with a stronger work ethic





SELF-RELIANCE

Our alumni share countless tales of the defining moment on their course when the visceral experience of self-reliance forges a lifelong benchmark for confidence and courage. For NCOBS, self-reliance is a key organizational principle. We strive to minimize the need for general operational support through our commitment to sustainable organizational practices. In that way, the greatest percentage of your contribution can be used for scholarships for deserving youth and adults.

My greatest challenge on the course was making it to the campsite at Johnson's Creek at 3 a.m. I wanted to give up so badly but the option just wasn't there. Now when I go home I won't quit so easily because I know I can do it if I set my mind to it.

-NCOBS Alum, 16 years old, 14-day course



.....

\$1,653,496 Total contributions in 2014

\$1,352,735 Scholarship contributions

.....

82% of total contributions were raised for scholarships



Financials

Ultimately, NCOBS will be best measured by how well we manage our resources rather than how much we earn or spend. The sum of our self-reliance, financial fitness, craftsmanship and compassion will be written in the number of lives we are able to transform through good stewardship of the abundance of resources in the organization.

-Elizabeth Whitten, NCOBS Chief Financial Officer



Statement of Financial Position

Year Ended March 31, 2014

Assets	2014	2013
Cash and equivalents	\$882,055	\$757,940
Accounts receivable	286,586	107,522
Grants receivable	127,331	226,057
Contributions and pledges receivable, net	427,406	276,331
Inventories	12,312	7,627
Prepaid expenses	122,712	59,017
Property and equipment, net	1,509,423	1,546,952
Long-term investments	11,048,985	10,264,571
Long-term note receivable	75,000	100,000
Cash value of life insurance	30,560	35,789
Total assets	\$14,522,370	\$13,381,806
Liabilities and Net Assets		
Liabilities:		
Line of credit payable	\$65,000	-
Accounts payable	213,431	201,578
Accrued expenses	43,083	75,259
Deferred revenue	353,537	335,915
Notes Payable	997,991	1,015,029
Capital Leases	24,687	34,088
Total liabilities	\$1,697,729	\$1,661,869
Net assets:		
Unrestricted	572,574	1,062,288
Temporarily restricted	6,395,922	4,868,063
Permanently restricted	5,856,145	5,789,586
Total net assets	12,824,641	11,719,937
Total liabilities and net assets	\$14,522,370	\$13,381,806

Statement of Activities

Year Ended March 31, 2014

	Unrestricted	Temporarily Restricted	Permanently Restricted	Totals
Support and Revenue				
Tuition and scholarship	\$4,431,805	\$123,582	\$-	\$4,555,387
Contributions	344,824	1,145,538	66,559	1,556,921
Federal and state grants	864,892	-	-	864,892
Interest and dividends, net	2,552	321,270	-	323,822
Net gains (losses) on investments	-	901,776	-	901,776
Gain (loss) on sale of equipment	4,057	-	-	4,057
Other revenue	487,412	-	-	487,412
Net assets released from restriction:				
Building acquisition restrictions	19,519	(19,519)	-	-
Program and support restrictions	1,305,803	(1,305,803)	-	-
Total support and revenue	\$7,460,864	\$1,166,844	\$66,559	\$8,694,267
Expenses				
School program services:				
Program delivery	4,597,809	-	-	4,597,809
Atlanta programming	78,615	-	-	78,615
Program administrative	902,395	-	-	902,395
Total school program services	5,578,819	-	-	5,578,819
Supporting Services:				
General and administrative	832,812	-	-	832,812
Marketing	391,886	-	-	391,886
Student services	442,517	-	-	442,517
Professional program sales	92,628	-	-	92,628
Development	250,901	-	-	250,901
Total supporting services	2,010,744	-	-	2,010,744
Total expenses	7,589,563	-	-	7,589,563
Change in net assets	(128,699)	1,166,844	66,559	1,104,704
Net assets, beginning of year	1,062,288	4,868,063	5,789,586	11,719,937
Net assets reclassification	(361,015)	361,015	-	-
Net assets, end of year	\$572,574	\$6,395,922	\$5,856,145	\$12,824,641

FITNESS

For NCOBS staff, fitness means possessing the organizational strength and flexibility to maintain the highest quality programs. Core to this pillar is a vibrant scholarship program in several communities. Thanks to the continued generosity of donors in Asheville, Atlanta, Charlotte, Philadelphia and Washington, DC, we work with partner schools in these communities to create lasting and positive change. Youth and educators are provided scholarships to participate in a range of programs, from school-based clubs and ropes course experiences, to youth wilderness courses, diversity-focused Unity courses and, for teachers, our year-long Educator's Initiative.

Our goal is to build a cadre of NCOBS alumni in partner schools who are well-prepared to serve as leaders and role models in their schools. According to NCOBS Board Member Rufus Dalton, who has worked tirelessly to build and sustain Charlotte's scholarship program since the early 1990s, "the future of Outward Bound lies in our ability to build partnerships with schools, both private and public. As the importance of this program builds, with careful and steady nurturing we will find the financial support to sustain such growth."

I had never rock climbed before, and finishing a multi-pitch climb while singing and smiling but also sweating and feeling my whole body work together with my mind was absolutely amazing.

-NCOBS Alum, 16 years old, 14-day course

Partners and Clients

GROUP EDUCATION PROGRAM CLIENTS

Agnes Irwin School, PA*
 Appalachian State University, NC
 Asheville School, NC
 Atlanta Public Schools, GA
 Boys and Girls Club of Metro Atlanta, GA
 Camp Coleman, NC
 Camp Judaea, NC
 Cannon School, NC
 Canterbury School, FL
 Cape Fear Academy, NC
 Charlotte Latin School, NC
 Creative Learning Academy, FL
 Donegal High School Experiential Education Program, PA
 Episcopal Academy, PA*
 Episcopal Day School, GA
 Evergreen Community Charter School, NC*
 Exploris Middle School, NC
 Highland High School, VA
 La Grange College, GA
 Mountain Alliance, NC
 North Carolina Teaching Fellows, NC
 Palmer Trinity School, FL
 Ransom Everglades School, FL
 Saint Mary's School, NC*
 Savannah Country Day School, GA
 University of North Carolina at Chapel Hill Student Government, NC
 University of North Carolina at Chapel Hill School of Education (MedX), NC
 Warren Wilson College, NC
 William Jewell College, MO

*Schools that were also Educator Initiative participants

REGIONAL SCHOLARSHIP FUND SCHOOL PARTNERS

Atlanta Public Schools, GA
 Alexander Graham Middle School, NC
 Bethesda-Chevy Chase High School, MD
 Boys' Latin Charter School of Philadelphia, PA
 Charles D. Owen High School, NC
 Clyde A. Erwin High School, NC
 Community Academy of Philadelphia, PA
 Freire Charter School, PA

Multi-Cultural Academy Charter School, PA
 Myers Park High School, NC
 Performance Learning Center, NC
 Thurgood Marshall Academy, DC
 Vance High School, NC

OUTWARD BOUND PROFESSIONAL CLIENTS

Atlanta Journal-Constitution
 American Leadership Forum - Charlotte, NC Chapter
 Beneteau Inc.
 Centers for Disease Control & Prevention
 Charlotte Pipe & Foundry Co.
 Cox Enterprises Inc.
 Delta Air Lines
 Dixon Hughes Goodman LLP
 Johns Hopkins University School of Nursing
 Jones Day
 Leadership Atlanta
 Liberty Fellowship
 Manheim
 Safeguard Self Storage
 University of North Carolina Kenan-Flagler Business School
 Young Presidents Organization
 Welch Foods

EDUCATORS INITIATIVE PARTNER SCHOOLS

Alexander Graham Middle School, NC
 Bethesda-Chevy Chase High School, MD
 Boys' Latin Charter School of Philadelphia, PA
 Charles D. Owen High School, NC
 Clyde A. Erwin High School, NC
 Community Academy of Philadelphia, PA
 The Field School, DC
 Freire Charter School, PA
 Georgetown Day School, DC
 Lawrenceville School, NJ
 Multi-Cultural Academy Charter School, PA
 Norfolk Academy, VA
 Riverdale Country School, NY
 Springside Chestnut Hill Academy, PA
 Thurgood Marshall Academy, DC

CRAFTSMANSHIP



NCOBS founders built the School upon the principle of excellence. These pioneers knew that in order to elicit the best of the human spirit, programs needed exceptional staff united by their commitment to this higher purpose: "to serve, to strive, and not to yield." NCOBS now serves as a national leader in experiential education because of our enduring pledge to this founding spirit. Our numerous endowment funds testify to donor confidence in our craftsmanship, as do the remarkable volunteers we continue to attract.

Our Board of Directors has always been central to the stewardship of NCOBS's core values and we welcome our new Chair, Rick Michaels, as an exemplar of this spirit. Deb Caughron, who served as NCOBS Board Chair from 2010 to 2014, provided highly effective and compassionate leadership during a time of complex organizational transition. We are extremely grateful for this contribution and her 14 years of service as an NCOBS board member.

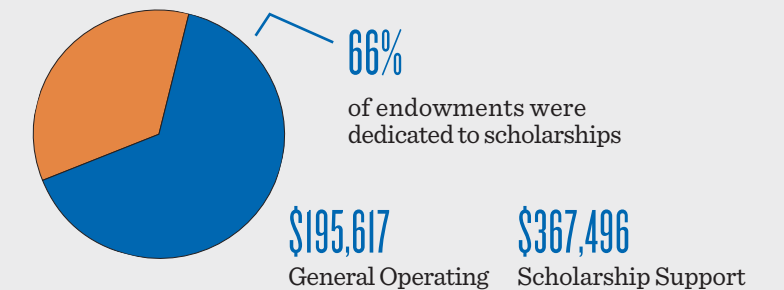
Rick, who is a graduate of NCOBS's 23-day educator's practicum, served as a teacher and a school headmaster before pursuing a career as a corporate human resource manager in North Carolina and New York. He is a skilled and compassionate leader whose sensitivity to the role of steward will serve the School well.

"As we anticipate the 50th anniversary of North Carolina Outward Bound, we are building on the powerful legacy of hundreds of leaders, instructors, staff, board members, volunteers and supporters who have made it possible for us to touch the lives of thousands of students each year. Our school has a rich tradition and a promising future."

-Rick Michaels, Board Chair, 2014

ENDOWMENT FUND SUPPORT 2014

\$561,113 Total endowment income available in '14



Endowments and Scholarship Funds

Endowments and scholarship funds sustain our scholarship outreach and general operating support. They are a wonderful way to honor a loved one and ensure that deserving students continue to be able to attend our high quality programs. You may create an endowment with a minimum of \$25,000 that can be paid over five years. To learn more, contact Dan Leroy, Director of Development at (828) 239-2103 or dleroy@ncobs.org.

ENDOWMENTS FUNDS

Bettigole Endowment Fund
 Blank Enhancement Endowment
 Richard Bowles Memorial Endowment Fund
 R. E. F. Buckley Endowment Fund
 Burke County/Phiifer/Haworth Endowment Fund
 Kevin Chynoweth Memorial Endowment Fund
 Robert M. and Annetta J. and Robert M. Coffelt Jr. Endowment
 B. Dalton Endowment Fund
 James M. Galbraith Memorial Endowment Fund
 GlaxoSmithKline Endowment
 Hearst Endowment Fund
 Thomas James Educational Endowment
 Andrew Jitkoff Memorial Endowment Fund
 Elizabeth (Libby) Jones Memorial Endowment Fund
 Hugh Jones Jr. Family Endowment Fund
 Leydic Endowment Fund
 Louis McGuinn Memorial Endowment Fund
 Baxter H. Miller Memorial Endowment Fund
 Royce Ratcliff Memorial Endowment Fund

Ellie Reynolds Memorial Endowment Fund
 RD III Endowment Fund
 Schell Endowment Fund
 Schwab Endowment Fund
 Stetson Endowment Fund
 Sulzberger Endowment
 Unity Endowment
 John Webster Endowment
 Zeke Zelif Endowment for Leadership Through Service

SCHOLARSHIP FUNDS

David and Valerie Adams Scholarship Fund
 Dave Genova Memorial Fund
 Ryan Glass Memorial Scholarship Fund
 Mark E. Headen Memorial Scholarship Fund
 Stephen Hicks Scholarship Fund
 Sloan Memorial Fund





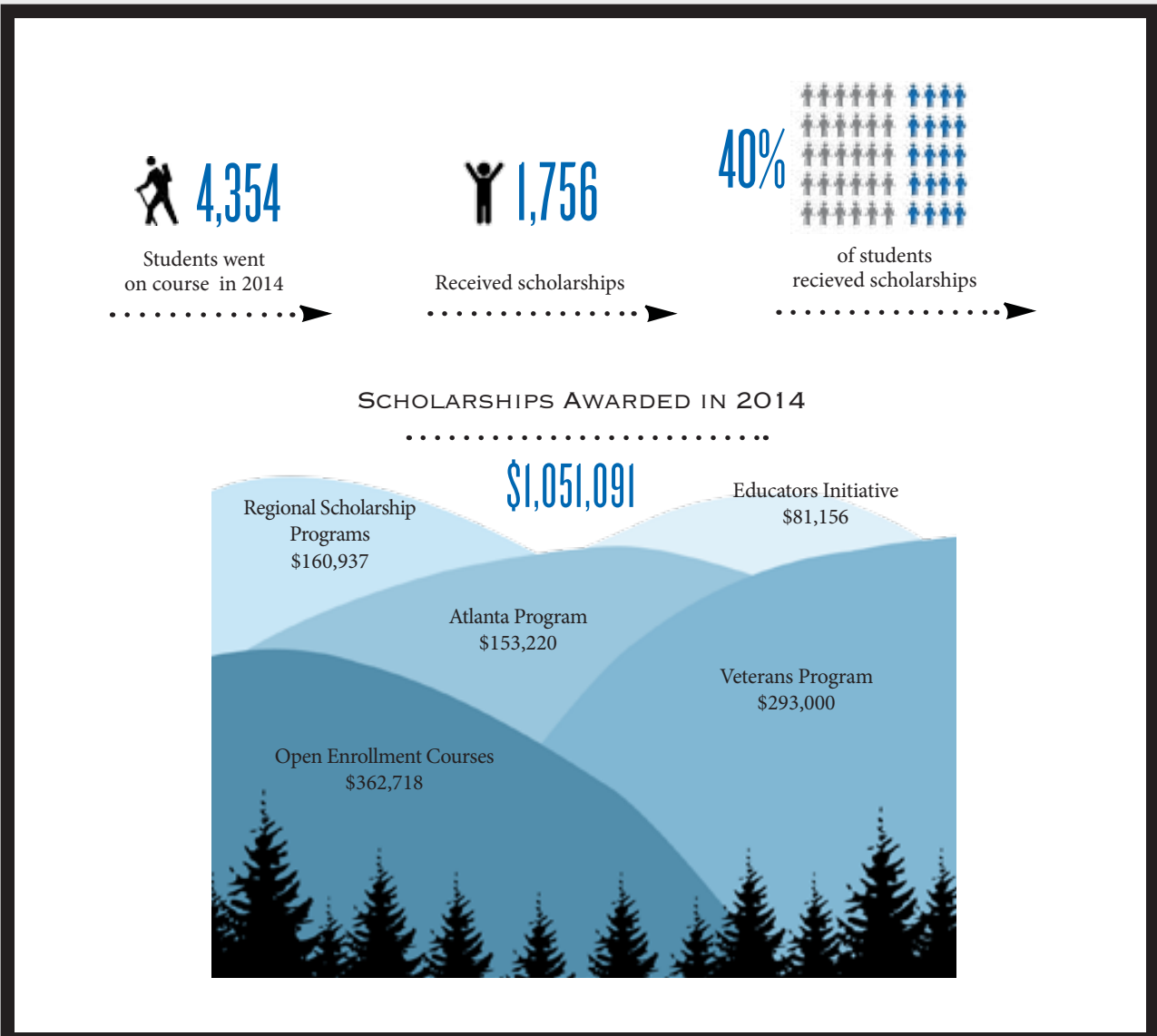
I am proud of myself for living in a compassionate manner, bonding with all types of people on course and being sensitive to their needs and feelings.

-NCOBS Alum, 18 years old, 8-day course



COMPASSION

Service to the greater good lies at the heart of NCOBS's commitment to Compassion. We are united as staff and Board in our belief that **"No Education is Complete without Outward Bound"** because our programs elicit the best of the human spirit and, as a community, we know we need more of that. Year after year, we strive to expand the number of students we are able to serve and who in turn, share stories of positive and indelible transformation. Thanks to generous donors who share our commitment to serve, we continue to grow our scholarship outreach each year.





We gratefully acknowledge the following donors who contributed \$100 or more during the 2013-2014 fiscal year.

Alpinist - \$10,000+

Anonymous (2)
Bernie and Holly Arghiere
Ann R. Baruch
Amos T. Beason
Arthur M. Blank
The Arthur M. Blank Family Foundation
Marjorie B. Buckley
Walter and Susan Buckley
Walter W. Buckley, Jr.
Community Foundation of Greater Greenville
Community Foundation of Western North Carolina
James M. Cox Foundation of Georgia, Inc.
David and Jill Dalton
Rufus M. Dalton
Foundation for the Carolinas
Gary Saltz Foundation, Inc.
General Microcircuits
Georgia-Pacific Foundation
Kenneth and Nancy Glass
W. Ted Gossett
The Keys Children's Foundation
William and Katherine McNabb
John and Michelle McNellis
Kent and Linda Satterfield
Schwab Charitable Fund
St. John Family Foundation Trust
Arthur O. Sulzberger
Kate Svitek Memorial Foundation
Vintage Oil & Gas, LLC
Mitchell and Leslie Wickham

Explorer - \$5,000 - \$9,999

Anonymous
Joel and Marla Adams
Lynn Allison
Amos and Kimberly Beason
Gordon and Sophia Caudle
Ada Lee and Pete Correll
James and Mary Helen Dalton
Robert and Barbara Dalton
The Ecology Wildlife Foundation
Boyd George
David C. Kolb
Edward and Lillian Lilly
Douglas and Shawn Mackenzie
Henry and Edith McHenry
Richard V. Michaels
Mission Hospital
Scott and Susan Puritz
Brook E. Reynolds
W. Noah Reynolds
Ken and Elizabeth Richards
Richard Schell
Silicon Valley Community Foundation
Benjamin and Diana Smeal
Guy Spriggs
Brad Stanback and Shelli Lodge-Stanback
Jeff and Janine Yass
Caroline and Wade Young

Belayer - \$2,500 - \$4,999

Anonymous (2)
John and Kim Belk
Community Foundation of New Jersey
Community Foundation of the Chattahoochee Valley
Frank and Margery Cooper
Fidelity Charitable Gift Fund
Scot A. Fisher and Shelly Lotman-Fisher
Terry Hahn and Teresa Velasco
David Hardy and Zina Oliver-Hardy
Ulrich Hewer and Cheryl Kariya
Sarah Linn
David and Anne Oldham

Scott and Anne Perper
Mary Claudia Belk Pilon
Robert M. Schwartzberg
Patrick J. Sheehan
Wells Fargo Securities, LLC
John and Charlotte Wickham
Virginia H. and Geoffrey F. Worden

Mountaineer - \$1,000 - \$2,499

Anonymous
David and Valerie Adams
Arkay Foundation
Auto Data Direct
Heather and Mark Baldino
David and Sheree Baldrige
Ian and Carrie Banwell
Peter and Amy Barry
Betsy L. Battle
Paul M. Bauer
Agnes R. Beane
James and Vanessa Belikove
Katherine and Thomas M. Belk Foundation
Franklin and Jan Blackford
Bob and Susan Brown
Annetta J. Coffelt
Robert M. Coffelt, Jr.
The Community Foundation for Greater Atlanta, Inc.

Gene and Gay Cooke
Rhea Elliott Cooper
Robert S. Cox
William and Pamela Crowder
Harry and Rebecca Dalton
Robert and Gwin Dalton
Mary Anne Dickson
Roddey and Pepper Dowd
Edward Jones
Mike and Nina Fischesser
Charlotte C. Fox
Matthew Gould and Jennifer Loehle
Sherrill and Mitchell Grant
Frederick C. Haab, Jr.
Britton and Janice Harper
Barnes and Cammie Hauptfuhrer
John Huie and Jaan Ferree
Cecelia Hurwich
Matthew and Lee Keiser
Lee and Daney Klingenstein
Glen Kohl
Barrett Kollme
Krumholtz Family Foundation
Jim and Linda Kuhns
Linda L. Lawson
Scott and Amy Leazer
W. States and Alison Lee
Alexander Macdonald
Shirlyn Ratcliff MacPherson
C.H. and Laurie Maguire
James and Karen McKenzie
Shelagh Meehan and Jordan Smyth
Merrill Lynch, Pierce, Fenner & Smith
Hal Meyer
Ann W. Miller
Sharon Mills
Reid and Martha Montgomery
Whitney H. Montgomery
Nancy Perot Mulford and R.C. Mulford
Myers Park High School, P.T.S.A.
Joseph and Lucinda Nicholson
Stephen Pandos
Pasadena Community Foundation
Performance Software Solutions
Plexus Capital
Bill Proudman
Robert and Lenni Puritz

Real Carriage Door Co., Inc.
Michael and Anne Rhoads
Sally and Russ Robinson
John and Nancy Sacci
Margaret Schilling
Steven Sheronas
David and Catalina Sibilsky
Siemens AG
Alex and Karen Stickney
Jean Sullivan
Phil Swan
George E. Sweazey
Robert J. Switzgable
John and Claire Tate
Meredith and James Thompson
Stella Thurston
Nathan and Elizabeth Vish
Gene Weil and Katherine Borsechnik
Matthew T. West
Peter Wetzel
Zeist Foundation
Michael G. Zeliff

Adventurer - \$500 - \$999

Anonymous
Aram and Linda Attarian
Charles and Ann Baker
Michael and Trude Bate
Joseph and Patti Beckham
Elizabeth Black
Robert and Geraldine Bryan
Robert and Milano Buckley
William and Julie Coleman
Peter and Nancy Covington
Ben and Wendy Craig
Ned and Adelaide Davis
Del Masco Fund
Molly Dinsdale
J. B. and Winnie Doherty
Mary A. Elfner
Michael and Joyce Ernst
Daniel Flanagan and Geoffrey Kerr
Gregory and Anne Giraud
Greater Kansas Community Foundation
Gregory Poole Equipment Company
Bruce and Cindy Grier
Mike and Nina Fischesser
George and Berkeley Harris
Dudley and Janie Hart
Peter and Pamela Hayes
Gary Hayward
Robert Hess
Harry and Louise Hill
Ken and Cathy Hines
Richard Jones
JPMorgan Chase Foundation
Nancy J. Lee
Thomas and Ellen Marshall
Peter and Dee Dee McKay
Tim McNichol and Anne Egan
Patricia Mead-Wall
Dan and Diane Meyer
Mountain Lakes International, LLC
Susan Nichols and Kathleen Wood
Mary Norris Preyer Oglesby
Outside Perspective, Inc.
Loretta C. Peterson
Peter and Karen Pierce
J. Gregory and Sarah Poole
Kenneth and Anne Powell
Cynthia Rosky
Marianne Scippa
Thomas and Katherine Shea
Thomas and Priscilla Siler
Kevin Stichter
Erica Stubner
Judith and Mark Taylor
Triangle Community Foundation, Inc.
Kathie S. Velazquez
Alexandra Buckley Voris and Michael Voris
David and Hollis Wenzel
Jody Whitehurst and Anita DiNovo
John and Debbie Will
Sankey and Connie Williams

Backpacker - \$250 - \$499

Anonymous
Theodore and Frances Ames
Charles and Phyllis Ault
Jeffrey and Theresa Baena
B.J. Bailey and Susan E. Knapp
Anita Barbey
John and Megan Barlow
Bettie M. Bedell
Deyne Bennt and Christine Bugos
Biogen, Inc.
Ernest Blackwelder and Sheila Hennessey
Tim and Lynn Borstelmann
Timothy Braun
Joshua and Amy Brown
Lon and Sheri Brown
James and Elinor Buck
Thomas and Marian Buckley
Charles Schwab
David Charlton
Jerry and Woody Clark
Scott Cragle and Linda Hodecker
Richard and Catharine Daileader
Katie Dalbey
Miriam A. Dixon
Tim and Margaret Drennan
Patricia L. Edwards
Joe Esparraguera
John S. Flood, Jr.
Erin Flynn
Michael Follo and Deb Follo Caughron
Judy Futch and Paul Smith
Scott Golden
Seth Goldman and Julie Farkas
David and Vicky Hedden
Joyce Lynn Heilig
Ian Heinzman
ImpactAssets
Louis and Kathleen Jaffe
Thomas James and Regina Cortina
Maria Jicheva
Joseph Jones
Megan Jones
Nigel and Dianne Jones
L. William Kay
Kevin and Claudia Kelly
John Kerrick
Jo Ann Kitik
Frank Krenek
Janet S. Kuck
Thaddeus Lawrence
Linda Lemmon
Ronand and Marchant Martin
The McClinton Family
Arch and Jennifer McIntosh
Paul Meehan
Michael Meyer
Mary Rachel Moore
Steve and Barbara Morgan
John and Suzanne Nash
Sarah Olliges and Meera Shah
Dan Preston
Jim and Cindy Rasmussen
Mark and Jane Ritchie
Paul Rowan
James E. Samsel and Kimberly J. McGuire
Robert and Anne Schleusner
Morgan Zeliff Shimabuku and Kyle Shimabuku
Harry B. Sloofman
Alice Smyth
Craig Stine
Robert Stout
Johnathan Taylor
UBS Financial Services Inc.
Alexis Warmath
Harriet Wasserstrum
Stephen and Elizabeth Whisnant
Shelley Yerman and Homi Kharas
Scott Yonker
Carl and Debra Zvanut

Climber - \$100 - \$249

Anonymous (4)
Mark and Amanda Abrahm
Richard and Judy Adamkiewicz
David W. Agran
Joseph Allen
Amy E. Ambachtsheer
Drew A. Arent
Bea Armstrong
Robert and Jane Avinger
Dennis and Martha Balske
Craig and Elaine Barger
Michelle Barnes
Bill and Harriet Barnhardt
Abigail D. Beck
Brian Bell
Gene and Suzanne Bell
Patricia P. Bent
Nancy Berry
Richard and Betty Beske
Kenneth and Robin Boger
Andrew and Mary Bonacker
John and Dorothy Borden
David Borsani
Robert and Wendy Bradford
David and Patricia Branch
Dawn Brandley
Mitchell Breit
Grady and Jean Britt
Criterion Brock
Edwin and Sophie Bronstein
Leslie Brunker
Peter Bryant
James Burdick
Andrew and Hope Burness
Robert and Nancy Campbell
Dorothy S. Caudle
Ceevee North America, LLC
William and Cathy Chambers
Vassilis Chantziaras
Charlotte Country Day School
Tor Clark
Derek and Eileen Coen
Michael and Mollie Cohen
The Community Foundation of Greater Greensboro, Inc.
James Cooke
Merle Cosgrove
Edward H. Covington
Rosemary and Jay Crawford
John C. Crotts
Keith R. Cudworth and Jane Coughlin
Mike D'Adamo
Elizabeth Caldwell Dalgliesh
Scott and Bridget Dawson
Jillian DeVleming
Richard and Tamra Dickinson
Ruth Dottino
Mary Beth Durkin and Hugh Panero
Jonathan and Tara Eaton
Robert and Wanda Eaton
William F. Eichfeld
Marcia Ellis
Eric Epstein and Karyn Gilvarg
Margaret Evans
Michael and Susan Fanelli
David and Rosemary Farnsworth
Thomas and Stephanie Favia
Susan Fedinec and Jay Rogers
Patrick and Suzanne Feeney
Judith E. Feerst
Margo Flood and Paul Bartels
Alexander and Janet Floyd
Mary French
Mary Frenette
Alex and Patricia Funderburg
G. S. Hoff Company
Robert and Patricia Gage
Fielding and Gally Gallivan
Sarah Belk Gambrell
Michael and Heather Goldberg
Goldman, Sachs & Co. Matching Gift Program
Jennifer Grady

Jon Graham and Elizabeth Ulmer
Frank J. Gribbin
Jean Gross
Jonathan Gubiotti
Douglas and Toshiko Hadden
Don Haldimann
Joshua Harris
David and Christine Hartzell
James H. Hassinger
Ray and Laura Hathaway
Peter Hawley
Peter and Marti Hazelrigg
Michelle and Eric Hein
Becky Helms
Mary L. Hill
Collins Hitchcock
Andrew Houghton
Gordon E. Howard
John and Dottie Howell
Mary R. Howell
James B. Hughes
Robert and Joanne Huss
Meredith L. Infeld
David and Robbie Irvin
Harry and Mary Jo Johnson
Freeman and Helen Jones
Patrick and Lele Kelly
Barrett Kennedy
George and Lee Kite
Joseph A. Kneib
Frank Konhaus
Bruce Lantrip
Lisa Lark
Michelle R. Lavigne
Jacqueline LaWarre
Jack and Laura Lee
Lance and Dorothy Lee
C. J. and J.K. Levendusky
Blair Levin and Patricia Friedman
Tony Lewis
Ellie Lizotte
John Logsdon and Dodie Maxted
M. Conrad Lotz
Michele R. Marston
Nick Martin
David Marvin
Jennifer Mazza
Bill and Jerry McAninch
Scott McElroy and Elizabeth Obenshain
Scott McGovern and Peggy Brown
Michael McLeod
Irving McNair
Morton and Rosaly Meltzer
Matthew E. Menner
Peg Minehart
K. Paulette Mitchell
Chase and Jennifer Monroe
Manuel and Barbara Montero
Catherine R. Moore
Jennifer Moore and Brian Harris
Jon and Sarah Morgan
Kenneth and Mary Ann Morgan
David and Jill Morganwalp
Rhonda Morin
James T. Morton
Frank and Arlene Moss
Willa Mullen
William Murray and Kim Melvin
Moose Mutlow
Dennis and Victoria Myers
Marla and James Nix
Perry Norris and Seana Doherty
Otis and Kathryn Northington
Marty A. O'Keefe
Douglas and Darcy Orr
Caroline Osborne
Derry Patterson
Sharon J. Patton
Kenneth Peebles
Edmund and Elizabeth Pendleton
Jacqueline M. Perry and Jeff Berend
Pfizer Foundation Matching Gifts Program
Christine Phelps

Gifts Continued...

Duane S. Pinnix
PNC Bank, N.A.
Randolph and Carolyn Powell
Lonnie A. Powers
Thomas and Elizabeth Pritchard
Leonard and Deborah Pugh
David Pyles
Lee Reading
Marc A. Redman
Eric and Anne Reenstierna
Christopher and Cheryl Reisert
Craig Rigell
Brandon and Terry Roberts
Surry P. Roberts
Kelly Ross
Rolland D. Royce
Joseph M. Ryan
Betsy and Meron Sason
Henry L. Savage
J. Randolph Schenck
Donna Schuurman
Kathy and Jerry Seldin
William Sellars, Jr. and Paula Connor-Sellars
Terrence and Noreen Shaughnessy
Carolyn and M. Shimabuku
Carl and Jane Showalter
Peter J. Silvester
Ross and Martha Sloan
Emily Smith
Mark Smith
Montie Smith
Phillip Kevin Smith
Lila Snow
Jessie P. Snyder
Lloyd and Deirdre Snyder
Paul and Diane Sonneck
Richard and Rebecca Stein
Donald and Isabel Stewart
Dick Stokes
Amanda and Harold Sturner
Peter and Patricia Sweet
Cora Szmodis
Jeanne L. Tannenbaum
Sigmund and Ellen Tannenbaum
Meghan and Jay Tatum
Albert and Alice Thompson
Andrew Thurber and Kathryn Perkins
Dominick Tralli
Franklin and Glenda Triplett
Bernie Trudeau
Larry and Nancy Turner
Terrence S. Voorhis
Ian and Janet Wade
Cathy Wallace and Scott W. Anderson
Stuart and Jennie Wallace
Victor Walsh and Yumiko Otsuki
Daniel and Carolyn Waterman
Michael Welp
Arthur and Judy Werner
Ramsey and Virginia White
Carolyn L. Wieden
Gretchen and Dick Williams
John and Lynne Williams
Alana Wilson
Shelly Withrow
Pam Wolfe
John Wolford and Rhonda Cooper
Bernie Wruble
Carolyn L. Wyatt
Ira K. Wydner
Jean Yarnall
Price and Margaret Zimmermann
Dan and Beth Zweig

Gifts In-Kind

98.1 The River
Blue Ridge Investment Partners, LLC
Blue Ridge Outdoors Magazine
Charlotte Running Company
Coca-Cola Bottling Company
Consolidated
ESPN 730 AM Radio
Michael Follo and Deb Follo Caughron
Great Outdoor Provision Company
Highland Brewing Company
Jesse Brown
Jus' Running
Andy and Kim Mink
Mountain Khakis
NoDa Brewing Company
Second Gear
Jim Steffe
Sturner Murray DDS
WellSport
WNC Magazine
WZGM 1350 FM Radio

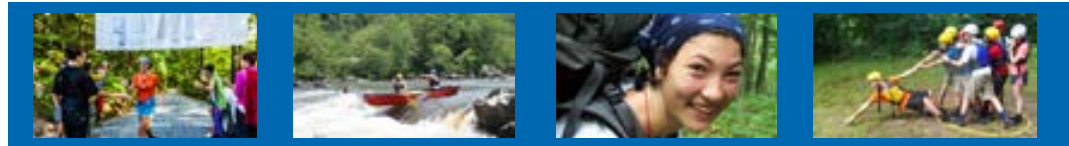
In Honor of ...

Ann R. Baruch
James Belikove
Irwin Belk
Kelly Biasioli
Marjorie B. Buckley
Walter W. Buckley
Deb F. Caughron
Harry M. Dalton
Rufus M. Dalton
Mike Fischesser
Margo Flood
Erik Fox
Corey Hadden
William A. Herring
Leslie H. Hitchens
Frank C. Krenek
Charles H. Maguire
Meghan Martiniere
Alejandro Montero
Hugh R. Montgomery
Whitney H. Montgomery
Scott Puritz
Helen Scarborough

Whitney Setser
Pat Sharpe
Morgan M. Zelif Shimabuku
Michèle Taylor
Stella R. Thurston
Francis Walsh
Robert M. Wickham
Elyse Will

In Memory of ...

Zachary Farnsworth
James G. Hollandsworth
Richard LaWarre
Keith W. Longey
Benjamin H. Reed
Leonard R. Rosky
Michael J. Rosky
Katherine W. Schwartzberg
Frederick D. Weathers



Programs

Wilderness Expedition Courses

(Open Enrollment) Courses integrated with activities that build confidence, trust, cooperation, communication, and leadership for students of all ages and backgrounds

Group Education Programs

Short, self-pay courses for intact groups from public and independent secondary schools, colleges and universities

Military Veterans Courses

Tuition- and transportation- free expeditions designed specifically for veterans and active service members transitioning into civilian lives

Educators Initiative Program

Year-long professional development program for traditional, charter and independent school teachers that positively impacts classroom culture and curriculum through wilderness, classroom and online components

Semester and Gap Year Courses

Long courses offered in remote, rugged settings that broaden students' world view while building skills in teamwork and leadership

Outward Bound Professional Program

Custom-designed programs that augment leadership training and team development at the workplace for business professionals

Outward Bound Atlanta Program

A wide range of team-building programs delivered in Metro Atlanta to groups of elementary, middle and high school students by Outward Bound Atlanta

Unity Project

Wilderness-based high school program designed to empower young people of diverse backgrounds to become compassionate leaders of social change with school-based follow up component

Regional Scholarship Programs

Partnership development with traditional and charter schools in Asheville, Atlanta, Charlotte, Philadelphia and Washington, DC that provides scholarships for students and teachers who work toward positive change in school cultures and in their community

Struggling Youth and Young Adult Program

Programs for struggling youth and young adults that teach conflict resolution, goal-setting, communication and decision-making skills

Families in Need of Services (FINS)

Prevention program delivered in Florida for at-risk youth and status offenders emphasizing character development, academic achievement and social responsibility

Stay Connected



GIVE

Over 40% of students who go on an NCOBS course receive a scholarship to help offset the cost of tuition. Every gift made to NCOBS has a lasting impact on the organization and its participants. In addition to giving an unrestricted gift, you have the option to give in other ways as well:

- Make a monthly donation
- Make a bequest
- Hold a fundraising event
- Create a scholarship or endowment in memory of a loved one
- Ask your employer to match your gift
- Make a stock gift

If you need assistance with your gift, call us at 828.239.2124.

KEEP IN TOUCH

- Update your mailing and email address or
- Sign up for our e-newsletter to stay up to date with School news. You can do so by emailing us at info@ncobs.org.
- Follow us on Twitter, Facebook, Tumblr or Pinterest
- Check out our website: www.ncobs.org

GO ON COURSE

Remind yourself why you fell in love with Outward Bound in the first place and challenge yourself to another course or introduce a friend to the adventure of a lifetime.



I didn't just survive on my @NCOOutwardBound course, I thrived!



Love seeing the photos; feels like yesterday that I was there. I met my fear head on at OB as well as my courage. It impacted my life in the most profound ways. I still go back there in my mind when I find myself afraid of this or that and remember that there is always a deeper place to touch to move through.



Strength, for me at least, does not come from a place of personal motivation. I am not strong so I can make it through, I am strong so we can all make it through together.

And we did make it through, we found a trail, and we found it together, because we were all strong, we didn't give up, and we did it for each other.

The U.S. Department of Agriculture (USDA) prohibits discrimination in all its programs and activities on the basis of race, color, national origin, age, disability, and where applicable, sex, marital status, familial status, parental status, religion, sexual orientation, genetic information, political beliefs, reprisal, or because all or part of an individual's income is derived from any public assistance. (Not all prohibited bases apply to all programs.) Persons with disabilities who require alternative means for communication of program information (Braille, large print, audiotape, etc.) should contact USDA's TARGET Center at 202-720-2600 (voice and TDD).

To file a complaint of discrimination write USDA, Director, Office of Civil Rights, 1400 Independence Avenue, SW, Washington, DC 20250-9410 or call toll free (866) 632-9222 (voice). TDD users can contact USDA through local relay or the Federal relay at (800) 877-8339 (TDD) or (866) 377-8642 (relay voice). USDA is an equal opportunity provider and employer.

North Carolina Outward Bound School would like to thank the many state and federal agencies who manage the state and national forests and park systems as a resource. NCOBS operates under special use permits from the following federal agencies:

Big Cypress National Preserve, FL
Blue Ridge Parkway, NC
Cape Lookout National Seashore, NC
Cedar Island National Wildlife Refuge, NC
Chattahoochee National Forest, GA
Cherokee National Forest, TN
CONAF-Chile
Everglades National Park, FL
Nantahala National Forest, NC
North Carolina State Parks
Ocala National Forest, FL
Pisgah National Forest, NC
Sumter National Forest, SC
Ten Thousand Islands National Wildlife Refuge, FL

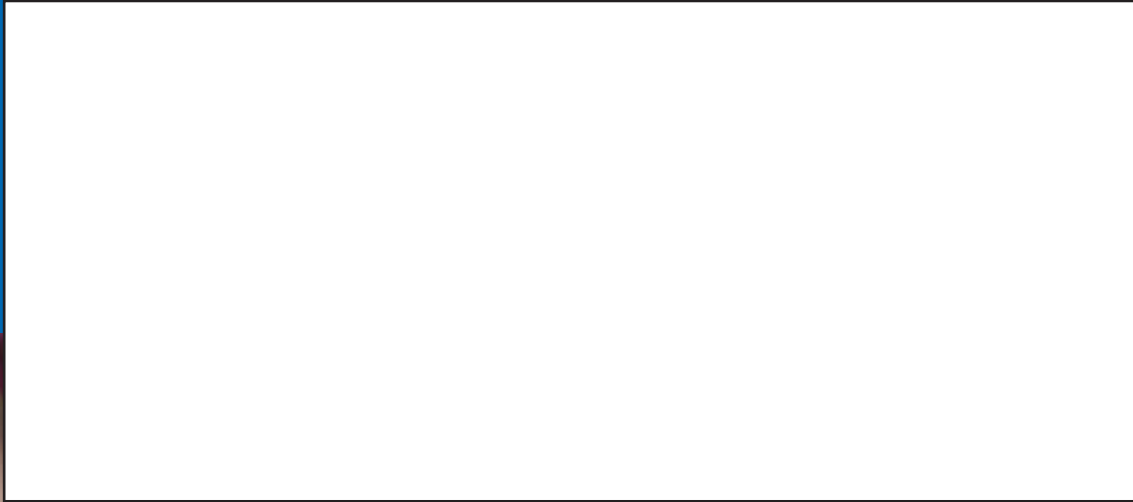


**NORTH CAROLINA
OUTWARD BOUND SCHOOL**

2582 Riceville Road, Asheville NC, 28805

www.ncobs.org | info@ncobs.org

P: (828) 299.3366 | F: (828) 299-3928



To Serve To Strive and Not To Yield



Post-Consumer Recycled Paper
with Vegetable Oil-based Inks